



# Tetric EvoFlow<sup>®</sup>

Nano-optimized flowable composite

# Tetric EvoFlow®

## YOUR IDEAL PARTNER...

The evolution continues:  
The continuous further development of the **world's leading** flowable composite from Ivoclar Vivadent – the successor product of Tetric Flow now with nano-optimized technology:

### **Tetric EvoFlow.**

You can rely on familiar quality with optimized technology.

For the first time ever, Tetric EvoFlow combines three types of nano-particles in a flowable composite:

- **nano-fillers**
- **nano-colour pigments**
- **a nano-modifier**

Nano-fillers complete the well-balanced filler technology, which optimally combines different types and sizes of fillers.

### **... IN HANDLING**

Tetric EvoFlow is flowable, if desired and stable, if required due to the **nano-modifier**.

The **optimum surface affinity**,



even in areas that are hard to reach, will give you peace of mind that all cavities beneath the restorations will be filled.

Tetric EvoFlow can be combined with other composites and is ideal as an initial layer under medium-viscosity composites.

Tetric EvoFlow is also **stable**, if required, and thus ideally suitable for small cavities, as well as Class V restorations.

No matter if the material is used as a liner or for small or Class V cavities - one consistency is sufficient to meet all the requirements. There is no need to choose between different flowable consistencies.

All shades can be light cured in 20 seconds with a light intensity of at least 500 mW/cm<sup>2</sup>. If the material is exposed to a light intensity of at least 1100 mW/cm<sup>2</sup>, only 10 seconds are enough!

# Tetric EvoFlow®

## YOUR IDEAL PARTNER...

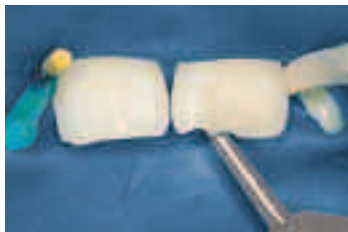


### ... FOR A VARIETY OF USES

Only Tetric EvoFlow is available both in Cavifils with an extra-thin tip and in syringes with matching metal tips – the choice is yours.



Irrespective of whether you choose the syringe with the metal tip or the Cavifil with the extra-thin tip, Tetric EvoFlow can be accurately applied in either case. You have everything under control.



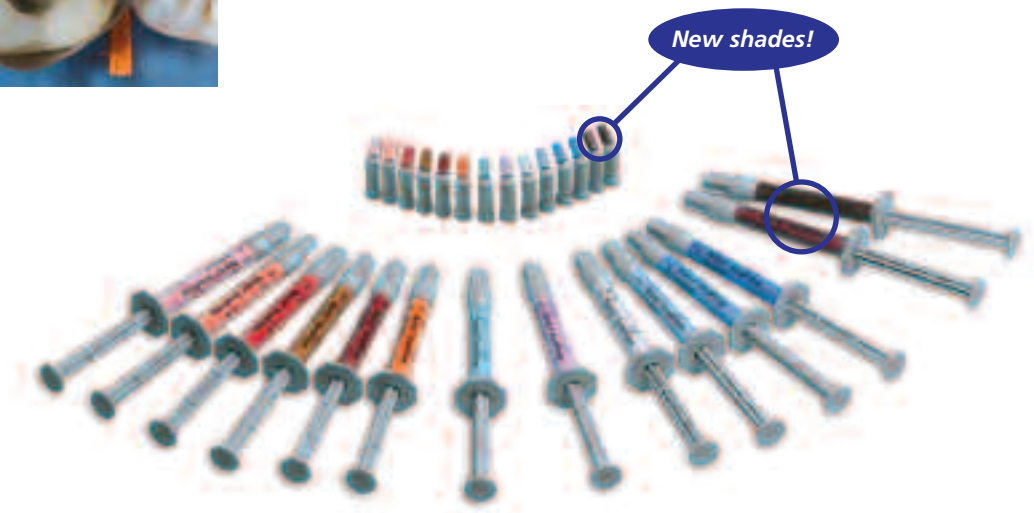
### ... WITH NEW SHADES

For the first time ever, a flowable composite is available in **darker shades than A4**: shades **IVA5** and **IVA6** are innovations developed by Ivoclar Vivadent. They represent the logical and consistent further development of shades A1 to A4.



Darker shades, such as IVA5 and IVA6, are becoming increasingly important in

the restoration of cervical defects in older patients.



## YOUR IDEAL PARTNER...

### ... AND FOR MEDIUM-VISCOSITY COMPOSITES

such as Tetric EvoCeram. The material ideally complements Tetric EvoCeram, since both products are based on the same technology and are optimally coordinated with each other.

As in Tetric EvoCeram, nano-technology has been incorporated

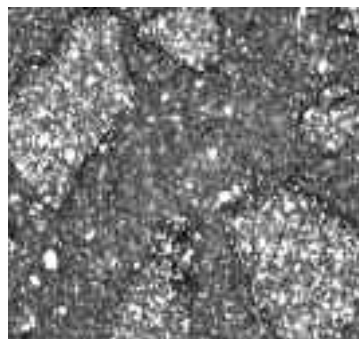


in different areas of Tetric EvoFlow:

1. **Nano-fillers** complete the well-balanced filler technology, which optimally combines various types and sizes of fillers. The well-balanced filler technology of Tetric EvoFlow and Tetric EvoCeram forms the basis of the aesthetics and clinical success of the materials: It is responsible for the materials' low wear, outstanding polishing properties, high surface gloss, high strength and a radiopacity which has been unmatched to date.

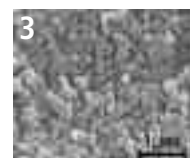
2. **Nano-colour pigments** are responsible for improving the adjustment of the shade of the restoration. The material's outstanding chameleon effect makes small restorations virtually invisible to the naked eye.

3. The **nano-modifier** ensures optimum surface affinity of the material in all situations whilst providing the stability required for Class V and small restorations. Running or bleeding of the composite from the cavity is prevented.



**SEM image** (2000x magnification): The prepolymers are clearly recognizable (pre-shrunk ground composite made of fillers, monomers and ytterbium fluoride). The different filler particles (medium grey shade) embedded in the matrix are also easy to distinguish. Ytterbium fluoride particles are visible in between. Some have agglomerated (recognizable by the very light colour).

In-house investigation R&D Ivoclar Vivadent AG, Schaan



**SEM images**  
(30000x magnification):  
1) Fillers 700 nm  
2) Fillers 400 nm  
3) Spherical mixed oxide 100 nm  
In-house investigation  
R&D Ivoclar Vivadent AG,  
Schaan

# Tetric EvoFlow®

## YOUR IDEAL PARTNER...

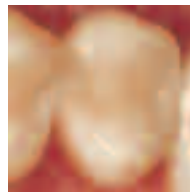
### ... FOR RADIOPACITY



The exceptionally good radiopacity of a restorative material is

the prerequisite for a sound diagnosis of secondary caries. The minimum requirement is a radiopacity of 200 % AI. Tetric EvoFlow exhibits a radiopacity of 360 % AI and thus clearly outmatches all commercial flowable composites.

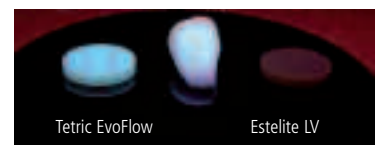
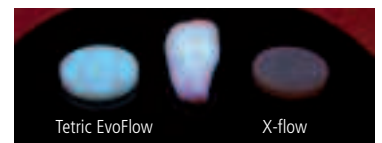
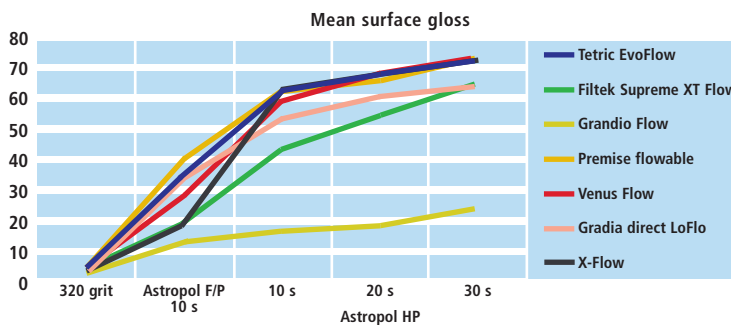
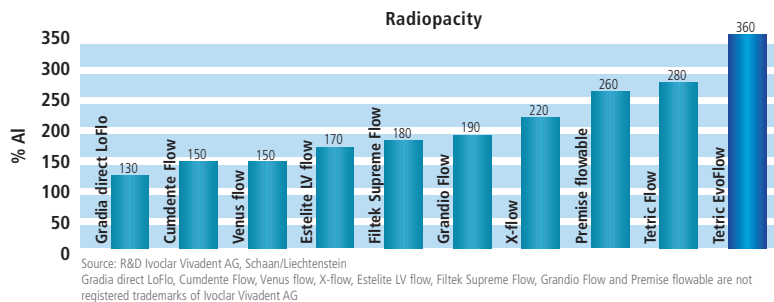
### ... FOR AESTHETICS



The material's **outstanding chameleon effect** makes small restorations

virtually invisible to the naked eye due to the **nano-colour pigments**. The high gloss of the restorations ensures smooth surfaces, which is a decisive advantage for patients.

In Class V restorations in particular, aesthetics play an important role. The restoration should blend in as harmoniously as possible, even under exceptional conditions, such as UV light. Teeth exhibit a natural fluorescence. Therefore, a material used for the fabrication of true-to-nature restorations should be fluorescent as well. Tetric EvoFlow fulfils this demand.



**Fluorescence**  
In-house investigation R&D Ivoclar Vivadent AG, Schaan. Filtek Supreme XT Flow, X-flow and Estelite LV are not registered trademarks of Ivoclar Vivadent AG

# Tetric EvoFlow®

Nano-optimized flowable composite

## THE EVOLUTION CONTINUES

### DELIVERY FORMS

#### SYRINGES



##### Assortment 8x2 g

1xA1, 1xA2, 1xA3, 1xA3.5, 1xA4, 1xB3, 1xA3.5 Dentin, 1xT  
Tetric EvoFlow shade guide  
Tetric EvoFlow tips

##### Refill, 1x2 g each

A1, A2, A3, A3.5, A4, B3,  
A3.5 Dentin, T, Bleach XL, Bleach L, Bleach I, Bleach M,  
**NEW:** IVA5, IVA6

#### CAVIFILS



##### Assortment 40x0.2 g

5xA1, 5xA2, 5xA3, 5xA3.5, 5xA4, 5xB3, 5xA3.5 Dentin, 5xT  
Tetric EvoFlow shade guide

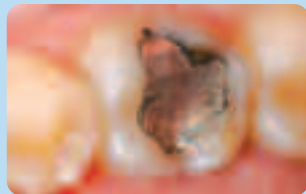
##### Refill, 20x0.2 g each

A1, A2, A3, A3.5, A4, B3,  
A3.5 Dentin, T, Bleach XL, Bleach L, Bleach I, Bleach M,  
**NEW:** IVA5, IVA6

##### Shade guide

with all 14 shades

## GET A GRIP ON COMPOSITES! Innovative and invaluable aids from the Ivoclar Vivadent **OptraLine**



Defective amalgam filling in a lower molar.



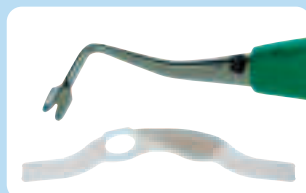
**OptraGate** – Simplifies the initial examination of patients and offers unimpeded access to the oral cavity during the subsequent preparation procedure.



**OptraDam** – With the anatomically shaped rubber dam without metal clamps, a completely dry operating field is achieved and both arches are fully exposed.



**OptraMatrix + OptraContact** – The selectively thinned matrix bands with an opening for the non-involved contact allow tighter and broader proximal contacts to be created.



The hand-held instrument features a patented forked working end with which a stabilizing "bridge" is formed, while the first composite layer is cured. This "bridge" makes the proximal contacts tighter and larger.



**OptraSculpt** – Thanks to the reduced composite stickiness, the slightly elastic modelling tips allow easy sculpting and contouring.



Situation after the restoration of a large Class I defect with Tetric EvoCeram. Finally, the restoration is polished with the new OptraPol polishing system.



**OptraPol** – With the re-usable one-step polishing system, excellent polishing results are achieved.

Descriptions and data constitute no warranty of attributes.

Printed in Liechtenstein  
© Ivoclar Vivadent AG, Schaan, Liechtenstein  
604369/0507/e/BVD

**Ivoclar Vivadent AG Clinical**  
Bendererstr. 2  
FL-9494 Schaan  
Principality of Liechtenstein  
Phone +423 / 235 35 35  
Fax +423 / 235 33 60  
www.ivoclarvivadent.com

**ivoclar**  
**vivadent®**